



Socio-Economic Profile of Schools

For the first time, parents, governments and the public have a meaningful measure to compare the socio-economic profile of all schools across Australia.

The Index of Community Socio-Educational Advantage (ICSEA) is a new measure of socio-economic status (SES) that enables meaningful comparisons of the socio-economic backgrounds of the students attending government, Catholic and independent schools.

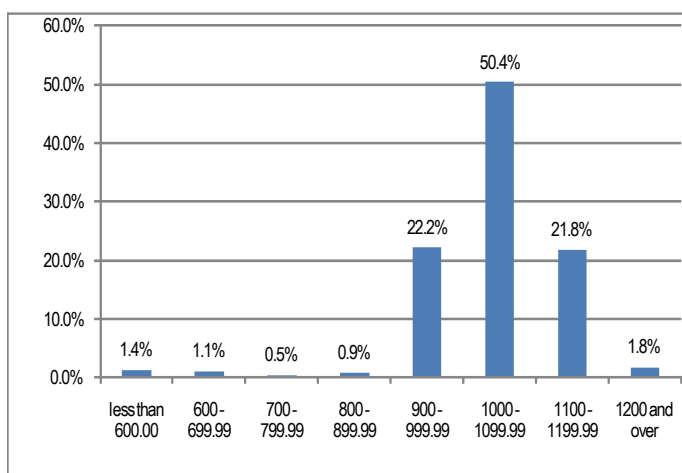
ICSEA has been developed and implemented specifically for the *My School* website as a means of identifying socio-economically similar schools across Australia.

Measuring Socio-Educational Need

ICSEA gives an indication of the background of students attending a school. It accounts for 16 factors that impact on a student's educational advantage including parental income, occupation and education, home internet access and whether English is the primary spoken language at home.

To determine a school's ICSEA profile, each of its students is assigned an ICSEA score based on data from the Australian Bureau of Statistics (ABS) Census Collection District in which the student lives. Student scores are averaged to produce an ICSEA score for the school.

Distribution of independent schools by ICSEA score



Independent schools add to the education choices available to Australian children, from all socio-economic backgrounds

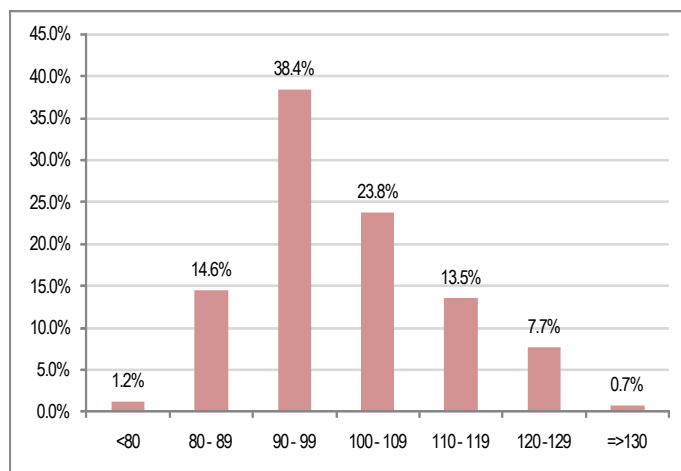
Comparison of ICSEA and SES

The socio-economic status of non-government schools is already measured. This is known as the SES model for the purposes of receiving funding from the Australian Government.

This measure, like ICSEA, also uses a range of indicators from the ABS Census of Population and Housing and is based on data from the Census Collection District in which the student lives.

Analysis by ISCA has shown that there is a high degree of correlation between the SES and ICSEA indices although overall scores for both independent and Catholic schools are higher using ICSEA.

Distribution of independent schools by SES score



Diversity of Independent Schools

Analysis of ICSEA has demonstrated that independent schools serve a diverse range of students across all socio-economic and socio-educational backgrounds.

The majority of independent schools are in the middle range of ICSEA scores. They offer choice for young Australians to be educated in schools with a diversity of cultural, religious and educational philosophies

Some independent schools are large, multi-campus schools that have been established for many years and over time have built up excellent facilities. Some schools are single sex, others co-educational. Some have boarding facilities to cater for students from regional and remote areas while others serve students with special learning needs.

Some independent schools are very small schools in remote areas serving Indigenous communities where education is seen as an important part of the right to be self-determining and a means to overcome severe disadvantage.

All of these schools contribute to the diversity and quality of Australian schooling.

Independent Schools Sector Diversity

Indigenous Students	8,652
Independents schools with 50%+ of indigenous enrolment	43
Students with disabilities	11,191
Special schools	54
Overseas students	10,124
Boarding students	17,097
Boarding schools	154
Schools with less than 200 students	40%
Schools with 200 -1,000 students	43%
Schools with 1,000—2,000 students	16%
Combined schools (primary & secondary)	61%

Diversity in Australian Schools

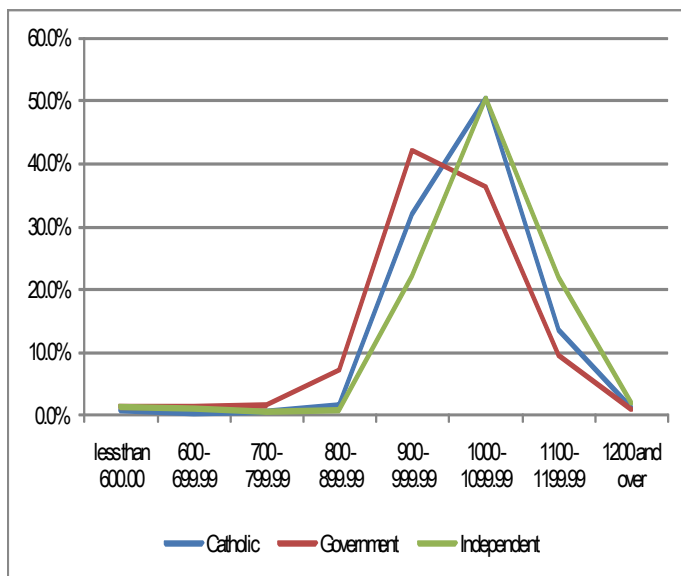
ICSEA has provided valuable comparisons of the socio-economic profiles of all Australian schools. It has confirmed that government, Catholic systemic and

ICSEA data debunks the myths about the socio-economic profile of students attending government and non-government schools.

independent schools educate a broad range of students from all socio-economic backgrounds.

Importantly ICSEA demonstrates that individual school sectors do not educate specific sections of society. Instead government and non-government schools contribute to educational choice and diversity.

Distribution of schools by ICSEA score by sector



The government, Catholic systemic and Independent sectors have similar socio-economic profiles as determined by ICSEA score comparisons. The majority of schools regardless of sector service communities that are in the ICSEA bandwidths 900 through to 1199.

Schools with the highest and lowest ICSEA scores

	Highest ICSEA (100)		Lowest ICSEA (100)
Government	61	Government	76
Independent	21	Independent	11
Catholic	18	Catholic	13

Looking at the 100 schools at each end of the ICSEA score range, it is clear that both groups include schools from all sectors, distributed in a broadly consistent manner.

Further comparison of the distribution of schools in each sector of schooling by their ICSEA scores show that while there is some minor difference, overall the SES profile of the bulk of the schools is very similar.