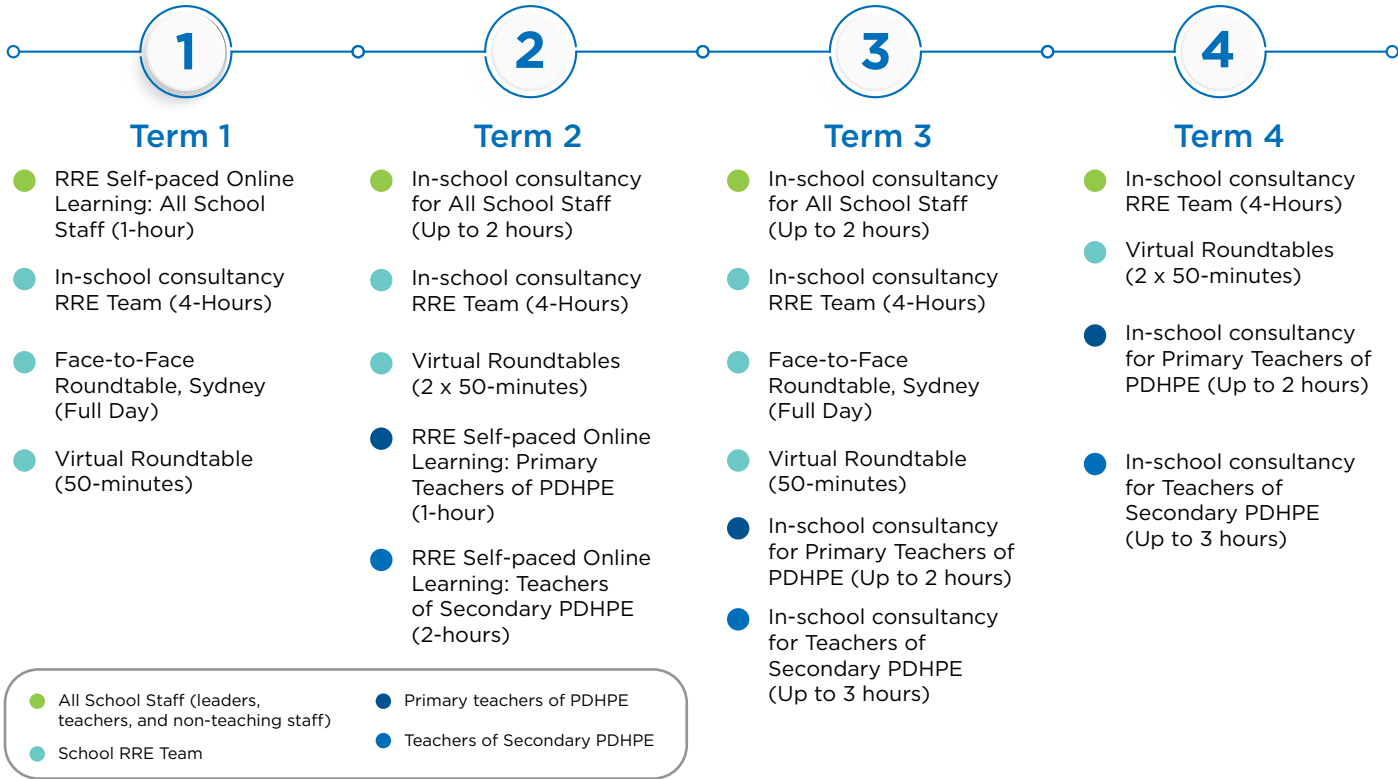


What would the initiative look like in 2025?

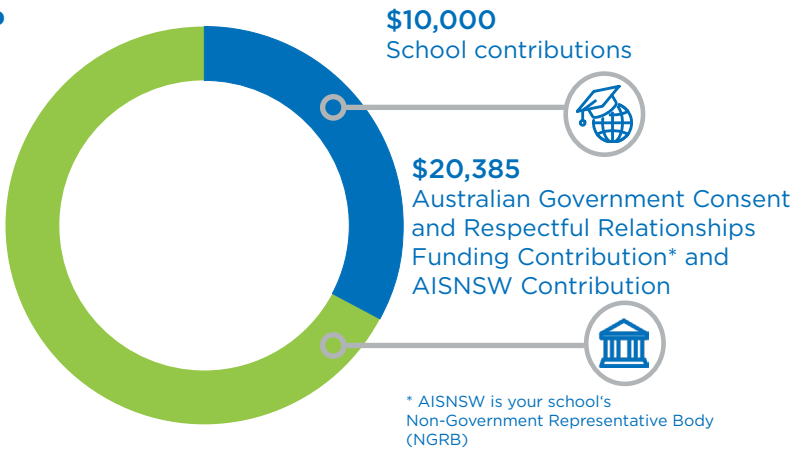


What is the co-contribution model?

Participation in Respectful Relationships: Proactive Education initiative is based on a co-contribution model through which schools contribute \$10,000 and commit to releasing staff as appropriate.

The Australian Government Consent and Respectful Relationships Funding contributes towards the initiative when AISNSW is your school's Non-Government Representative Body.

There is a travel subsidy for regional schools for the two roundtables in Sydney.



Respectful Relationships
Proactive Education



Respectful Relationships:
Proactive Education

We're calling you in ...

AISNSW welcomes the opportunity to partner with Independent schools to co-create a pathway that enables all children and young people to thrive in their relationships.

For any questions related to the Respectful Relationships: Proactive Education please contact Education Consultant, Katrina Mostyn.

Katrina Mostyn
Education Consultant
kmostyn@aisnsw.edu.au
+61 2 9248 3632



Register your Expression of Interest

Find out more at www.aisnsw.edu.au



Respectful Relationships
Proactive Education



Respectful Relationships: Proactive Education

Consent and respectful relationships education empowers children and young people with the skills and attitudes to build and maintain healthy, equal and safe relationships throughout their lives.

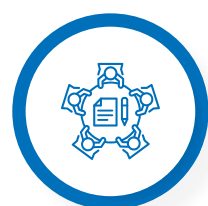
What is the *Respectful Relationships: Proactive Education* initiative?

The Respectful Relationships: Proactive Education initiative is:

- A 12-month partnership between AISNSW and Independent schools to support a comprehensive whole-school approach to consent and respectful relationships education.
- Evidence-based and fosters collaboration with academics, experts and participating schools through consultancies, roundtable discussions and professional learning.
- Proactive and preventative education for all students focusing on consent and respectful relationships education, including the drivers of gender-base violence.



What are the key focuses?



**Leadership
and
Culture**



**Teaching
and
Learning**



**Staff
Professional
Learning**



**Family and
Community
Partnerships**

What are the **outcomes**?



Develop a whole-school approach

Collaboratively develop a comprehensive whole-school preventative approach to consent and respectful relationships education that actively includes staff, students, families and the broader school community.



Foster support networks

Foster support networks with experts in consent and respectful relationships education, as well as colleagues from a variety of Independent schools.



Enhance shared knowledge and skills

Enhance the shared knowledge and skills of all school staff to support the effective implementation of consent and respectful relationships education tailored to each school's unique context.



Increase teacher confidence

Increase teacher confidence in delivering engaging, age-appropriate and evidence-based consent and respectful relationships education aligned to the NSW PDHPE curriculum.

Who would be involved?

The following members of staff would be involved in the initiative:

- A school-based Respectful Relationships Education Team (3-4 staff)*
- All school staff including leaders, teachers and non-teaching staff
- Primary teachers of PDHPE
- Secondary teachers of PDHPE

* Each school has a small Respectful Relationships Education Team to lead and drive the initiative in 2025. This team would include a member of the school's leadership who is able to make decisions on behalf of the school to progress planning and actions, as well as keeping the school's executive informed. It would also include the Head of PDHPE or faculty representative and a primary leader, as well as a whole-school champion of respectful relationships education.



What professional learning is included in the initiative?



3 x Self-paced Online Learning Experiences

All School Staff (leaders, teachers and non-teaching staff)
Primary Teachers of PDHPE
Secondary PDHPE Teacher



In-School Consultancies

4 x School RRE Team
2 x All School Staff (leaders, teachers and non-teaching staff)
2 x Primary Teachers of PDHPE
2 x Teachers of Secondary PDHPE



2 x Face-to-Face Roundtables in Sydney*

2025 Cohort Schools RRE Teams (Full Day)

*travel subsidy for regional schools



6 x Virtual Roundtables

2025 Cohort Schools RRE Teams (50-minutes)



6 x School Virtual Touch Point Meetings

School RRE Leadership Team (30-minutes)