



Perspectives

Your school in focus



Perspectives: Your school in focus surveys are for leaders seeking to gain a comprehensive view of their whole school community. These surveys – based on the research and evidence supporting sustained, impactful school improvement – are designed to meet the unique needs of independent schools in NSW.

To capture the contextual specificity of individual schools, relevant topics are explored enabling leaders to make well-informed decisions. Using the rigorous data collected, schools can identify their strengths and areas for future growth and change. This helps ensure that future priorities and goals are targeted and reflect stakeholder needs. Progress towards these goals can be tracked longitudinally.

Perspectives: Your school in focus is part of the AISNSW core service for members. As part of this core service surveys may be administered every two years.

The *Perspectives: Your school in focus* suite of surveys is a powerful tool for school leaders seeking to leverage the potential of quality data to make evidence-informed decisions.

Service Offerings

School leaders access their data via an online dashboard and can further explore specific areas for a more nuanced understanding. They may also delegate dashboard access to additional staff.

Each school receives a comprehensive report, providing an in-depth analysis of their results. Here schools have the opportunity to compare results against those of other de-identified independent schools.

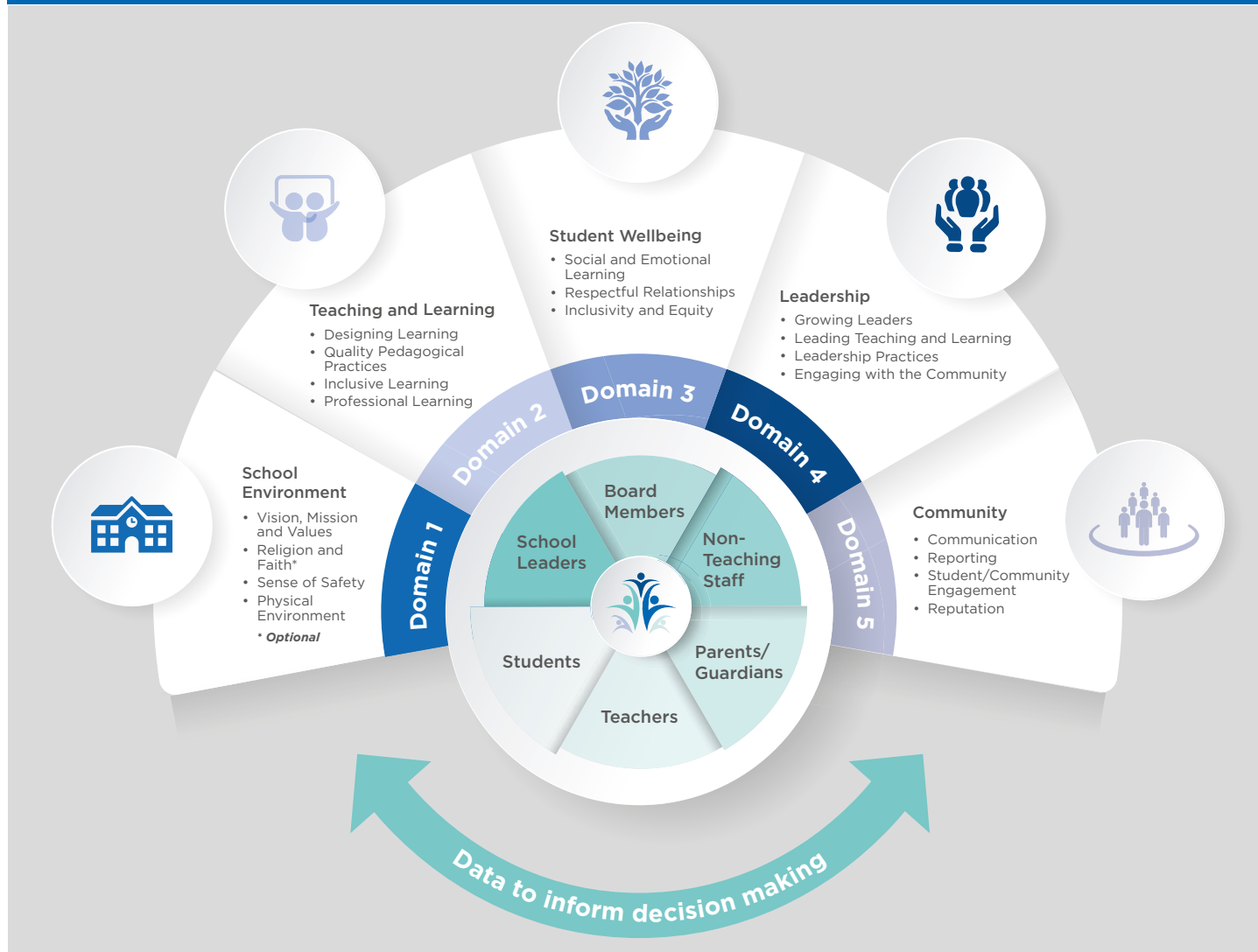
To further support the analysis and interpretation of data, schools can seek further assistance from AISNSW's expert consultants.

A number of additional services are available to support individual school needs. These include the opportunity to add customised questions, or to undertake an intensive examination of specific domain areas.

<i>Perspectives: Your school in focus</i>	Member Service	Fee for service
Access to <i>Perspectives: Your School in focus</i> survey suite every two years	✓	
Single sign on access for Principals and delegates via AISNSW Profile	✓	
Access to your school's <i>Perspectives</i> dashboard	✓	
Access to <i>Perspectives</i> report	✓	
Opportunity to compare school data with 'like' schools (de-identified)	✓	
Additional support with data interpretation and action planning		✓
Custom additions to surveys		✓
Access to domain specific surveys		✓

For more information, check the AISNSW website, or contact RandD@aisnsw.edu.au

Perspectives: Your school in focus collects data from **six important stakeholder groups** – Teachers, Students, School Leaders, Board Members, Non-Teachers and Parents/Guardians – across **five domains**: School Environment, Teaching and Learning, Student Wellbeing, Leadership and Community.



Domains



School Environment is a critical element of each student's school experience and contributes significantly to school success. This domain provides an indication of school climate through the exploration of the school's **vision, mission and values**, the student's experience of **religion and faith (optional)**, the **sense of safety** the school fosters and the **physical environment**.



Teaching and Learning is at the core of a school's purpose. It includes evidence-based decision-making processes which maximise student learning outcomes. Active and purposeful teaching and learning supports students' academic achievement, growth and school success. This domain focuses on **designing learning, quality pedagogical practices, inclusive learning** and **professional learning**.



Student Wellbeing is essential for both academic and social development and is optimised by safe, supportive and respectful school learning environments and interpersonal relationships. This domain focuses on **social and emotional learning, respectful relationships** and **inclusivity and equity**.



Leadership plays a pivotal role in the improvement of learning outcomes and opportunities for all students. Leaders draw on their range of knowledge when working with others to create the necessary changes to systems and practices. This domain focuses on **growing leaders, leading teaching and learning, leadership practices** and **engaging with the community**.



Community involvement and engagement is a distinctive element of being an independent school. This domain focuses on **communication, student/community engagement** (co-curricular activities, sport and service learning), **reporting**, and **reputation**.