

Make Connections Grow Skills Engage with Learning



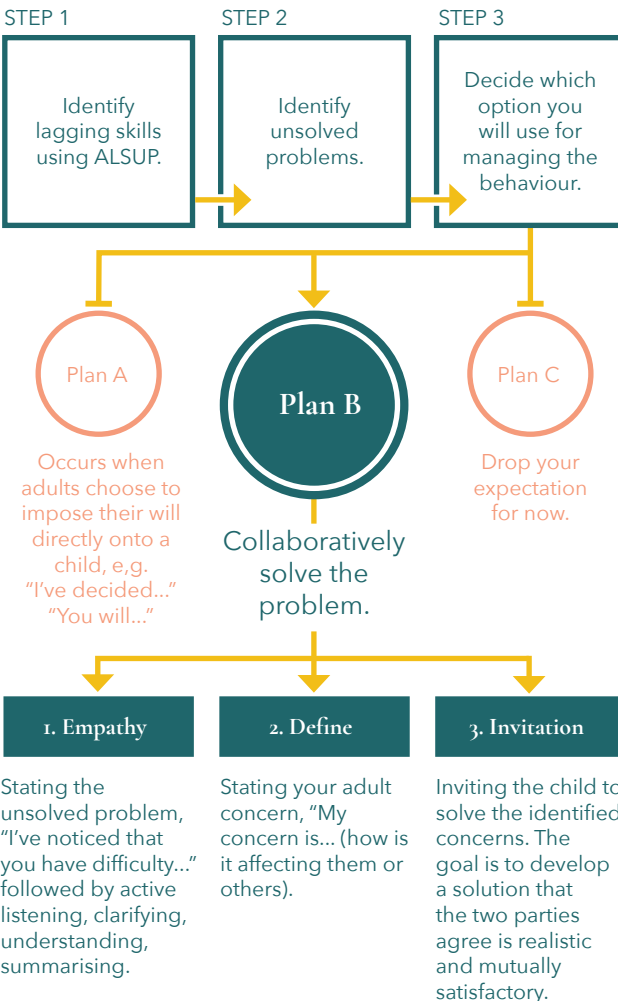
Connect
Grow
Engage

"KIDS DO WELL IF THEY CAN, NOT IF THEY WANT TO."

"Challenging kids are not always challenging: they are challenging only when the expectations placed on them outstrips their skill. As such, maladaptive behaviour is caused when a child lacks the skill needed to deal with a given situation."

Dr. Ross Greene, The Explosive Child.

Collaborative & Proactive Solutions Model:



Plan B achieves 5 goals:

1. Pursue unmet expectations and ensure that your concerns about a child's challenges are addressed.
2. Solve the problems precipitating a child's challenging episodes in a collaborative, mutually satisfactory, and durable fashion.
3. Teach the child the skills they're lacking.
4. Reduce challenging behaviour.
5. Create a positive relationship.



speedale_cps



Lives in the
Balance