



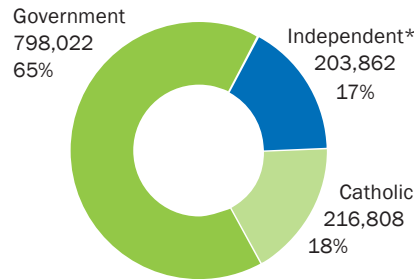
NSW Independent Schools *at a glance* 2018

Independent schools are non-government schools operating autonomously, registered by NSW Education Standards Authority, and are educationally and financially accountable to their Boards and the Australian and NSW Governments. Information is from the Australian Government Department of Education, Australian Bureau of Statistics, and Australian Curriculum and Reporting Authority.

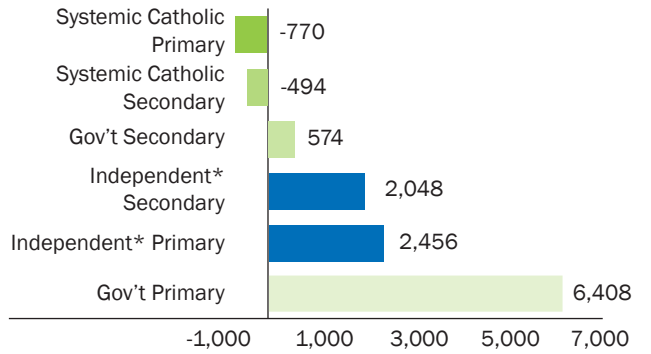
NSW Independent* schools

- Australia's largest independent school sector
- Australia's 4th largest school education sector
- Supporting geographic, cultural and socio-economic diversity

NSW enrolments by sector



Change in NSW enrolments by sector 2017-2018



NSW Independent* schools

Schools¹

- 490** Schools
- 70% Are faith-based
- 53 Boarding Schools
- 8 New schools in 2018

¹ Schools and campuses

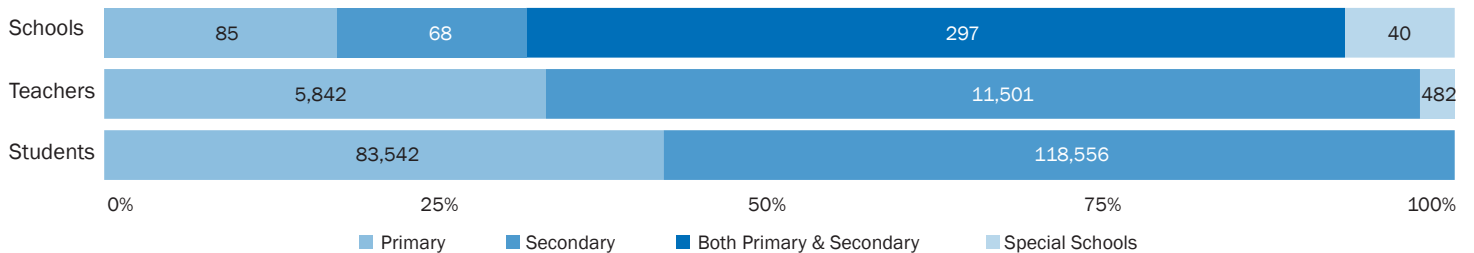
Workforce

- 31,908** Employed (Head Count)
- 17,826** Teachers (FTE)
- 8,605** Other Staff (FTE)
- 35% Of teachers are male

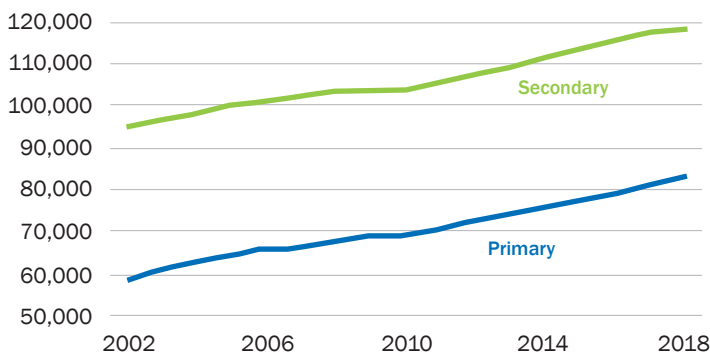
FTE refers to full time equivalent

Students

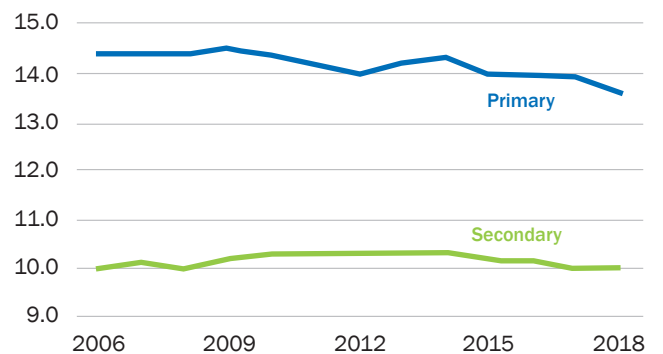
- 203,864** Students
- 4,468** More students in 2018
- 36,479** Students with a Disability
- 4,103** Aboriginal & Torres Strait Islander students



Independent* school enrolments 2002-2018



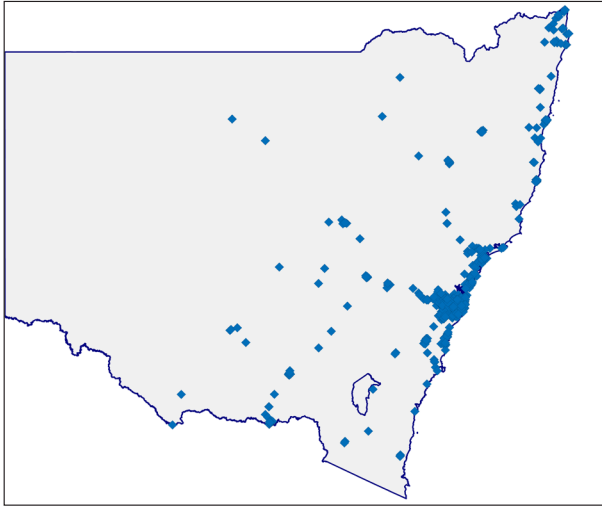
Independent* school student to teacher ratios 2006-2018



* Independent Catholic school figures are included as independent

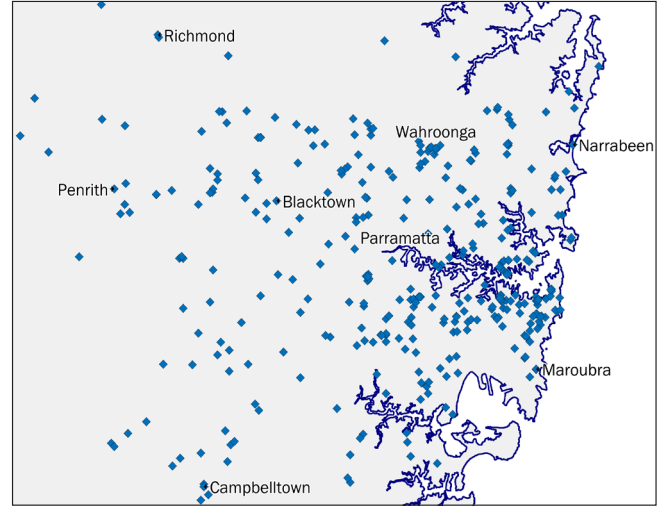
Location of Independent* schools in NSW

New South Wales



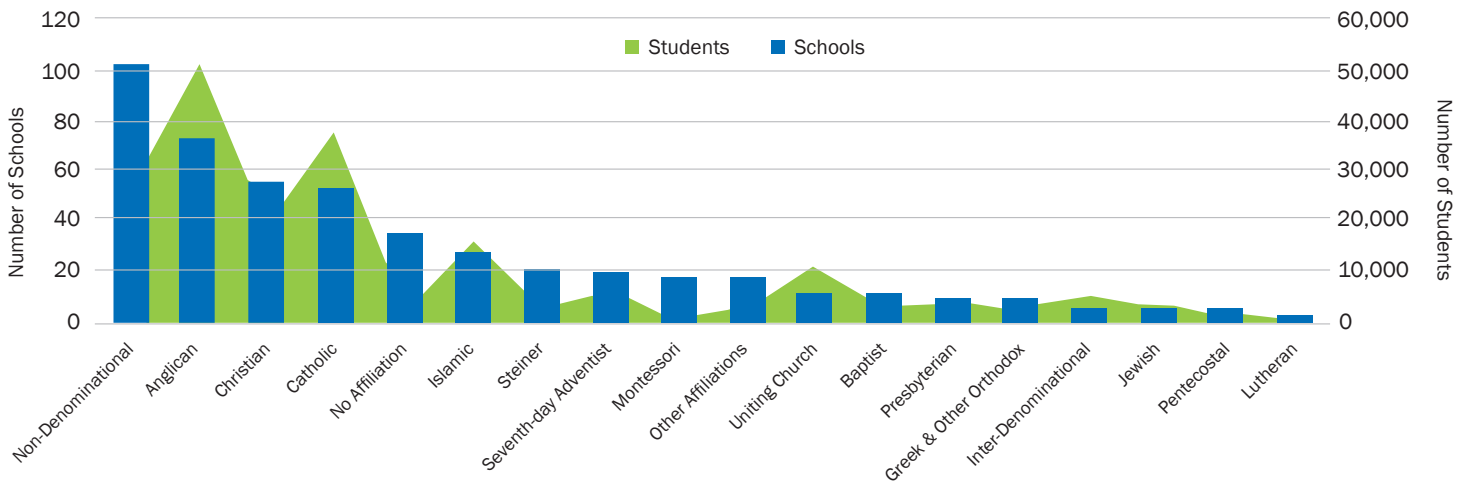
Blue diamonds are Independent* schools in NSW

Metropolitan Sydney

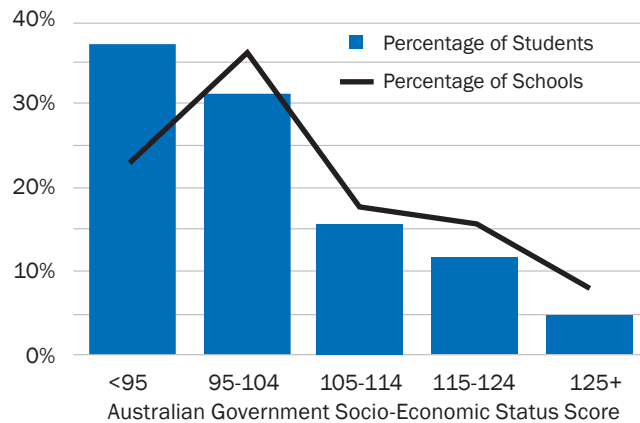


Blue diamonds are Independent* schools in Sydney

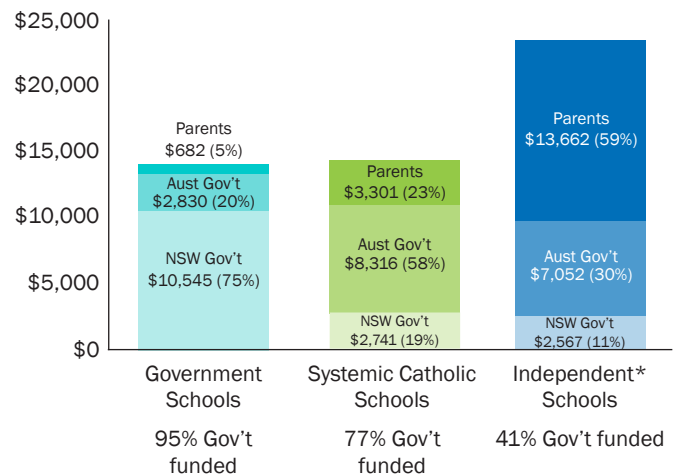
Diverse philosophies and affiliations



Independent* schools socio-economic status



Sources of funding (per student ave) 2017



* Independent Catholic school figures are included as independent