



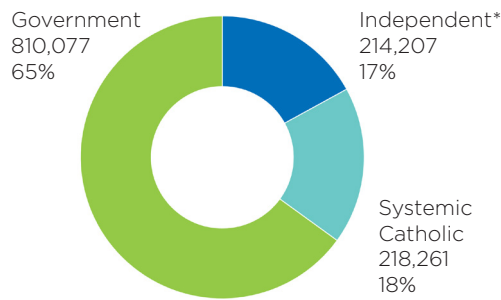
NSW Independent Schools *at a glance* 2020

Independent schools are non-government schools and include Independent Catholic schools. They operate autonomously, are registered, and their teachers accredited by the NSW Education Standards Authority. They are educationally and financially accountable to their Boards, and the Australian and NSW Governments. Information is sourced from the Australian Government Department of Education, Australian Bureau of Statistics, and NSW Independent schools.

NSW Independent Schools

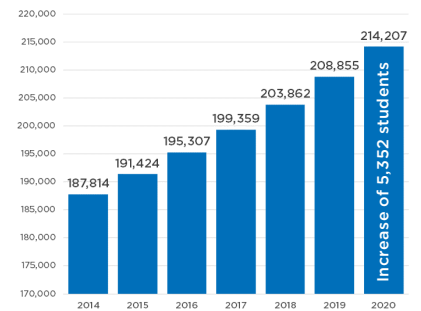
- Australia's largest independent school sector
- Australia's 6th largest school education sector
- Supporting geographic, cultural and socio-economic diversity

NSW Enrolments by Sector



*Includes Catholic Independent Schools

Enrolment Growth in NSW Independent Schools 2014-2020



NSW Independent Schools

499

SCHOOLS

- 61%** Combined Primary/Secondary Schools
- 16%** Special Assistance Schools/Special Schools
- 50** Boarding Schools

28,081

EMPLOYED (FTE)

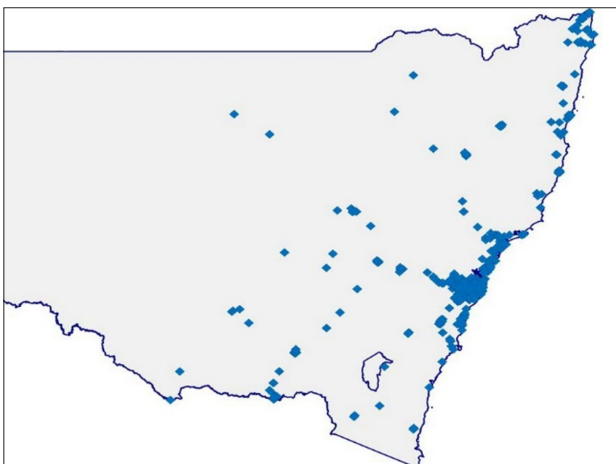
- 18,560** Teachers (FTE)
- 9,521** Non-teaching staff (FTE)

214,207

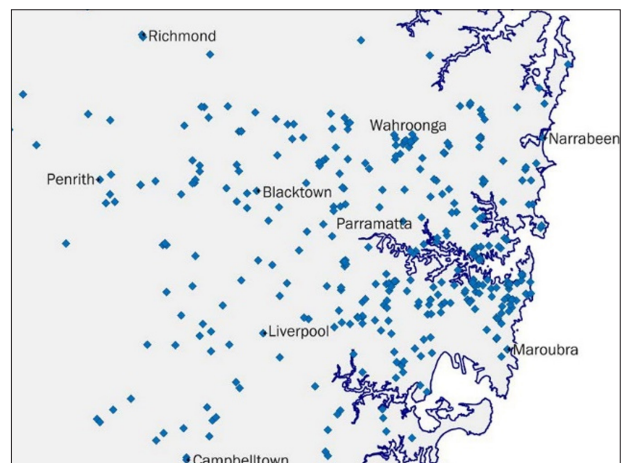
STUDENTS

- 87,775** Primary students
- 126,432** Secondary students
- 4,690** Aboriginal and Torres Strait Islander students
- 4,947** Boarding students

Independent Schools in NSW



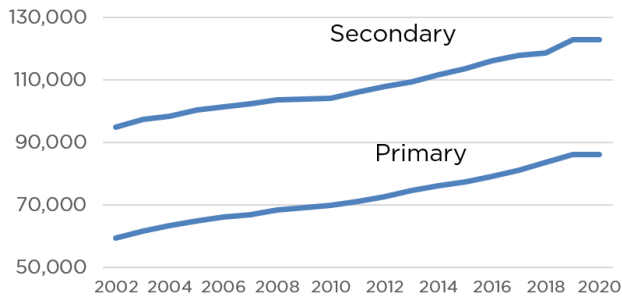
Independent Schools in Metropolitan Sydney



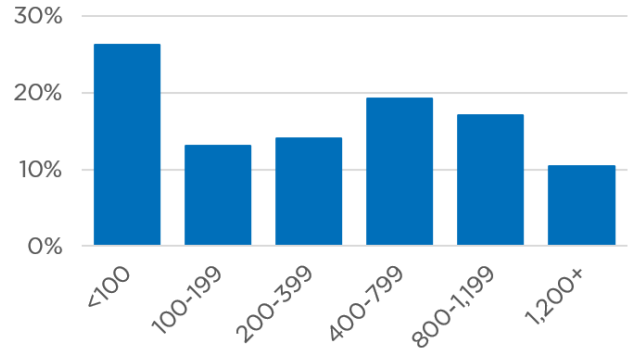


NSW Independent Schools *at a glance* 2020

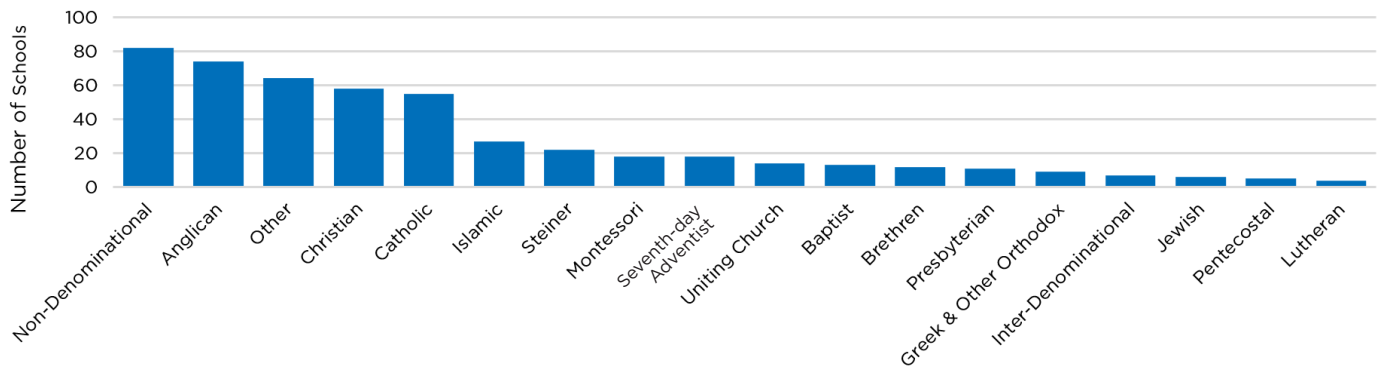
Students in Independent Schools



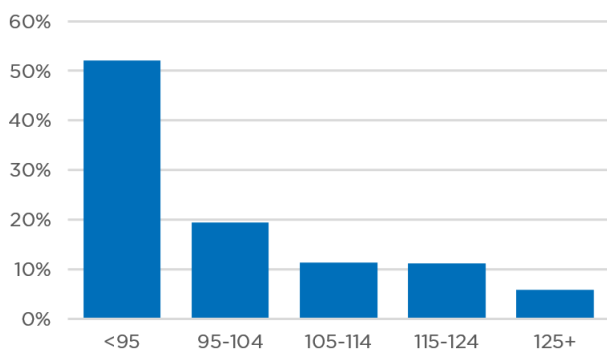
Percentage of Independent Schools by Enrolment Size



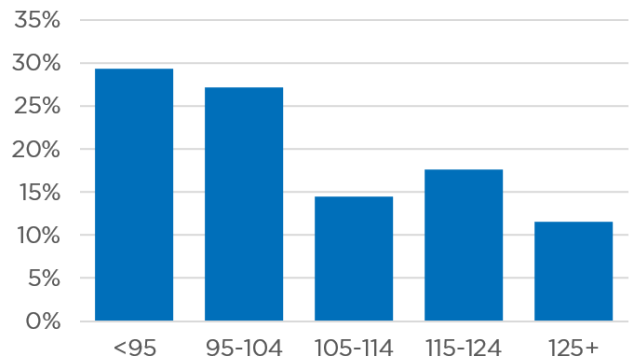
Number of Schools by Affiliation



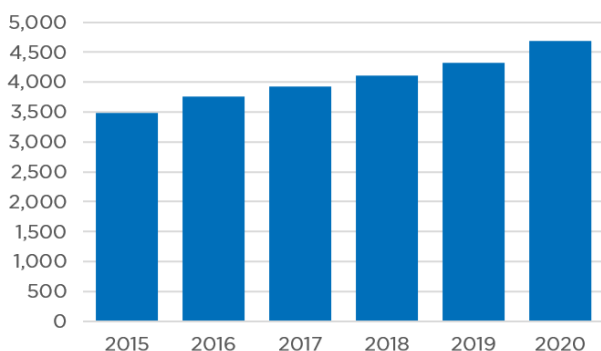
Socio-Economic Diversity of Schools



Socio-Economic Diversity of Students



Aboriginal and Torres Strait Islander Students



Students by Grade

