



Perspectives

Comparative Report (Summary)

ABOUT PERSPECTIVES: YOUR SCHOOL IN FOCUS

The *Perspectives: Your school in focus* suite of surveys has been created by The Evidence Institute at AISNSW. It is a powerful suite of surveys that school leaders can use to collect quality data to support evidence informed decision making for their school.

Perspectives: Your school in focus collects data from important stakeholder groups - Students, Teachers, Parents/Guardians, School Leaders and Non-Teaching Staff - across five domains: School Environment, Teaching and Learning, Student Wellbeing, Leadership, and Community. All stakeholders respond to survey items on a six-point Likert scale (scored from 1-6), and have an opportunity to provide written feedback at the end of the survey.

Your School undertook the surveys in [Date], to canvas the perceptions of the whole school community.

ABOUT THE SCHOOL

Insert your school's profile here - you have approximately 250 words available. This paragraph is provided by the school, and is an excellent opportunity to share your school's strengths and accomplishments.

For example: Our school was founded in 1894, and is an anglican, co-educational school, supporting students from kindergarten to year 12. Spread across two campuses, we provide a wide range of educational, co-curricular and extra-curricular, activities for our students. The quality of our education is rooted in our school's values of respect, kindness and collegiality. We aim to support students to be confident world citizens, to grow to be leaders in their communities and professions, and to strive to contribute to a better future for all. We provide all our students with a rich education, well balanced between rigorous academic pursuits, resilience and wellbeing, and a wide range of co- and extra-curricular offerings to enable our young people to explore their passions and develop into well-rounded individuals



YOUR SCHOOL

Lorem ipsum dolor sit amet, consectetur adipiscing elit, sed diam nonummy nibh euismod tincidunt ut laoreet dolore magna aliquam erat volutpat. Ut wisi enim ad minim veniam, quis nostrud exerci tation ullamcorper suscipit lobortis nisl ut aliquip ex ea commodo consequat. Duis autem vel eum iriure dolor in hendrerit in vulputate velit esse molestie consequat, vel illum dolore eu feugiat nulla facilisis at vero eros et accumsan et iusto odio dignissim qui blandit praesent luptatum zzril delenit augue dui dolore te feugait nulla facilisi. Lorem ipsum dolor sit amet, consectetur adipiscing elit, sed diam nonummy nibh euismod tincidunt ut laoreet dolor.

YOUR SCHOOL'S AGGREGATE SCORE

The figure below provides a high-level aggregate score, combining all responses for items across all five dimensions and for all stakeholders. Your School's score is in light blue, whilst the comparative dataset - featuring the combined data of 49 other independent schools in NSW and South Australia from 2019 and 2020 - is in dark blue.

Your School's overall mean and combined aggregate schools' mean

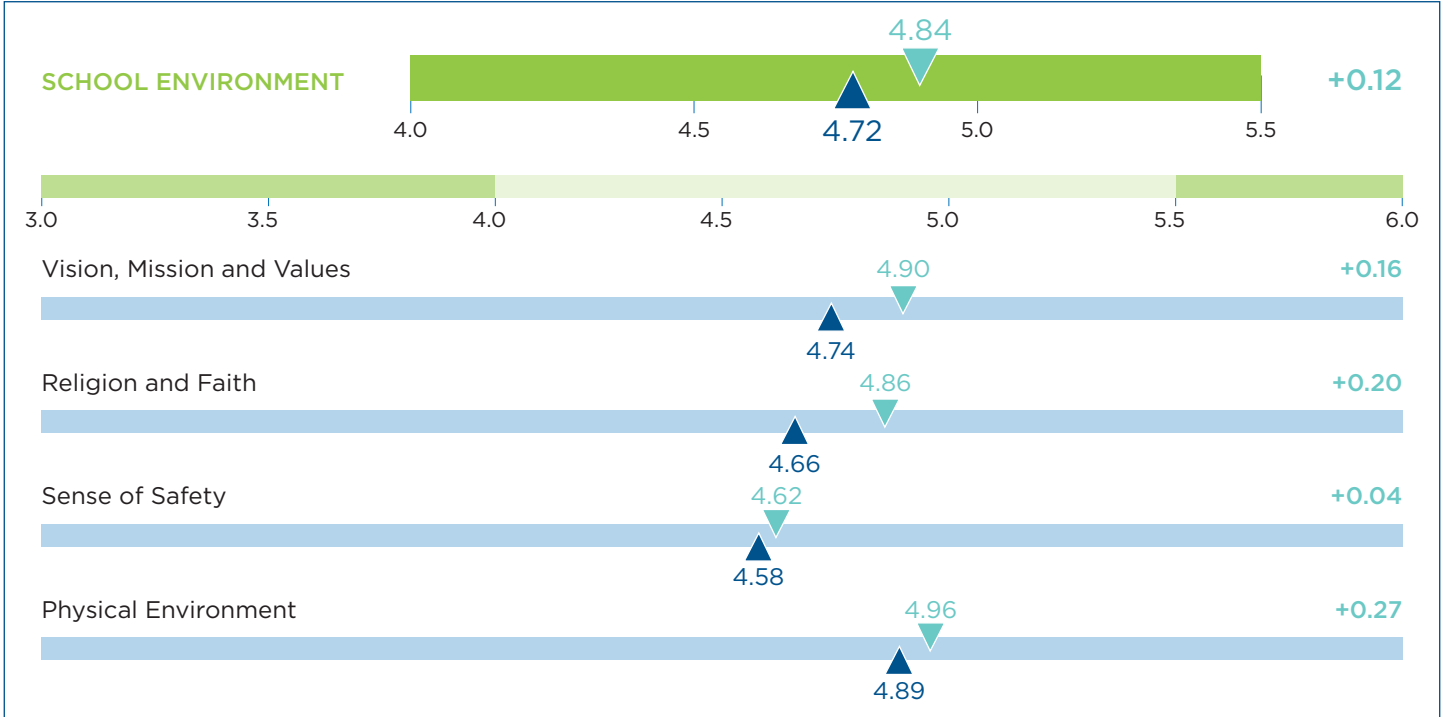


▼ Your School ▲ Combined aggregate schools' score



DOMAIN SCHOOL ENVIRONMENT

School Environment is a critical element of each student's school experience and contributes significantly to school success. This domain provides an indication of school climate through the exploration of the **school's vision, mission and values**, the **sense of safety** the school fosters and the **physical environment**.

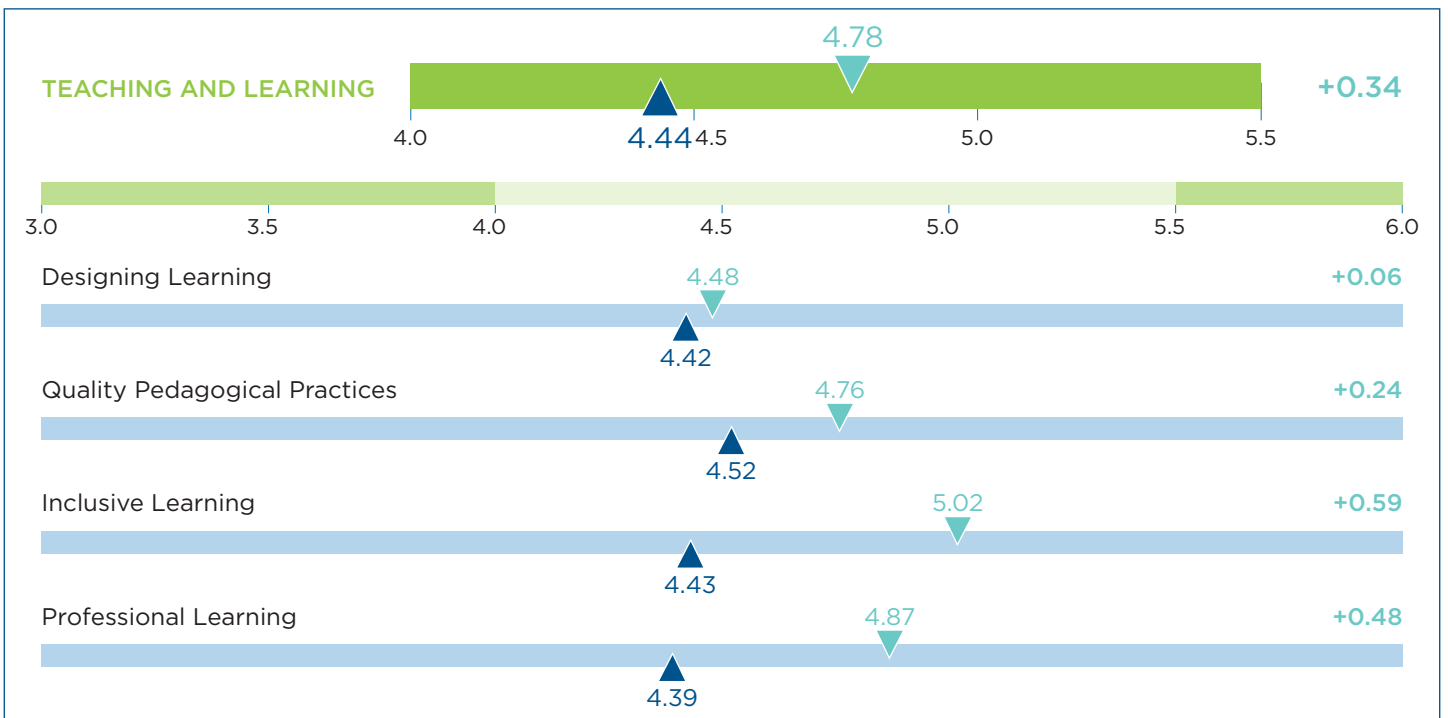


Your School's performance across the domain of School Environment is strong, with high means in two of the four dimensions.



DOMAIN TEACHING AND LEARNING

Teaching and Learning is at the core of a school's purpose. It includes evidence-based decision making processes which maximise student learning outcomes. Active and purposeful teaching and learning supports students' academic achievement, growth and school success. This domain focuses on **designing learning**, **quality pedagogical practices**, **inclusive learning** and **professional learning**.

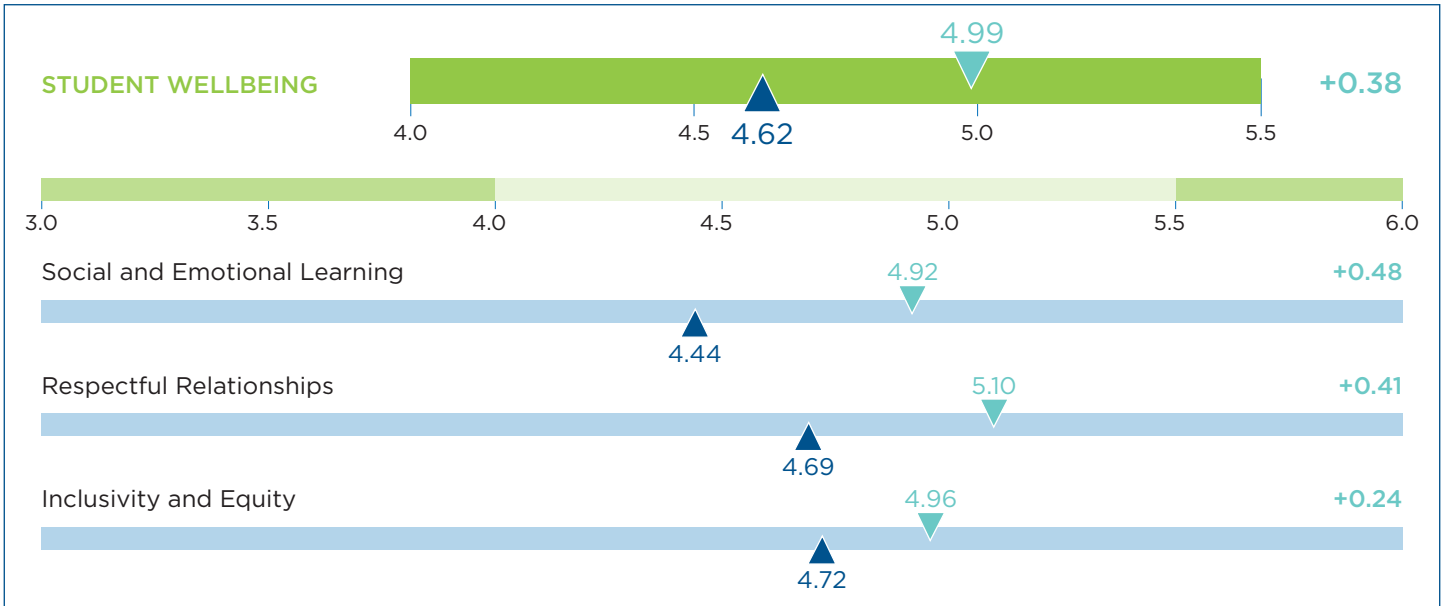


Your School's performance across the domain of Teaching and Learning is mostly strong, with a very high means in the dimensions of **inclusive learning** and **professional learning**. The mean for **designing learning** indicates scope for further exploration of related data.



DOMAIN STUDENT WELLBEING

Student Wellbeing is essential for both academic and social development and is optimised by safe, supportive and respectful school learning environments and interpersonal relationships. This domain focuses on **social and emotional learning, respectful relationships and inclusivity and equity**.



Your School's performance across the domain of Student Wellbeing is strong, with high means, especially in the dimensions of **social and emotional learning** and **respectful relationships** when compared against the other schools who are included in the survey's aggregate dataset.



DOMAIN LEADERSHIP

Leadership plays a pivotal role in the improvement of learning outcomes and opportunities for all students. Leaders draw on their range of knowledge when working with others to create the necessary changes to systems and practices. This domain focuses on **growing leaders, leading teaching and learning, leadership practices and engaging with the community**.

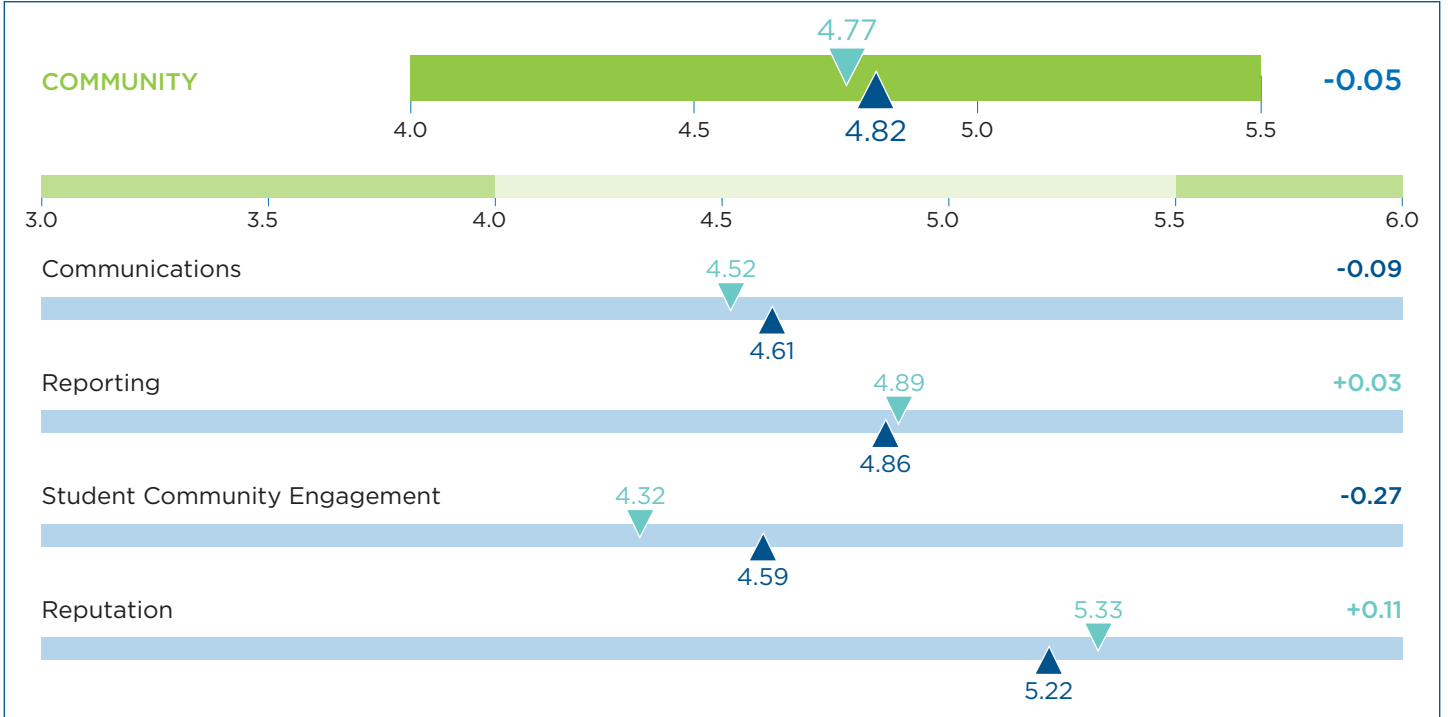


Your School's performance across the domain of Leadership is strong across most dimensions. The mean for **teaching and learning** indicates scope for further exploration.



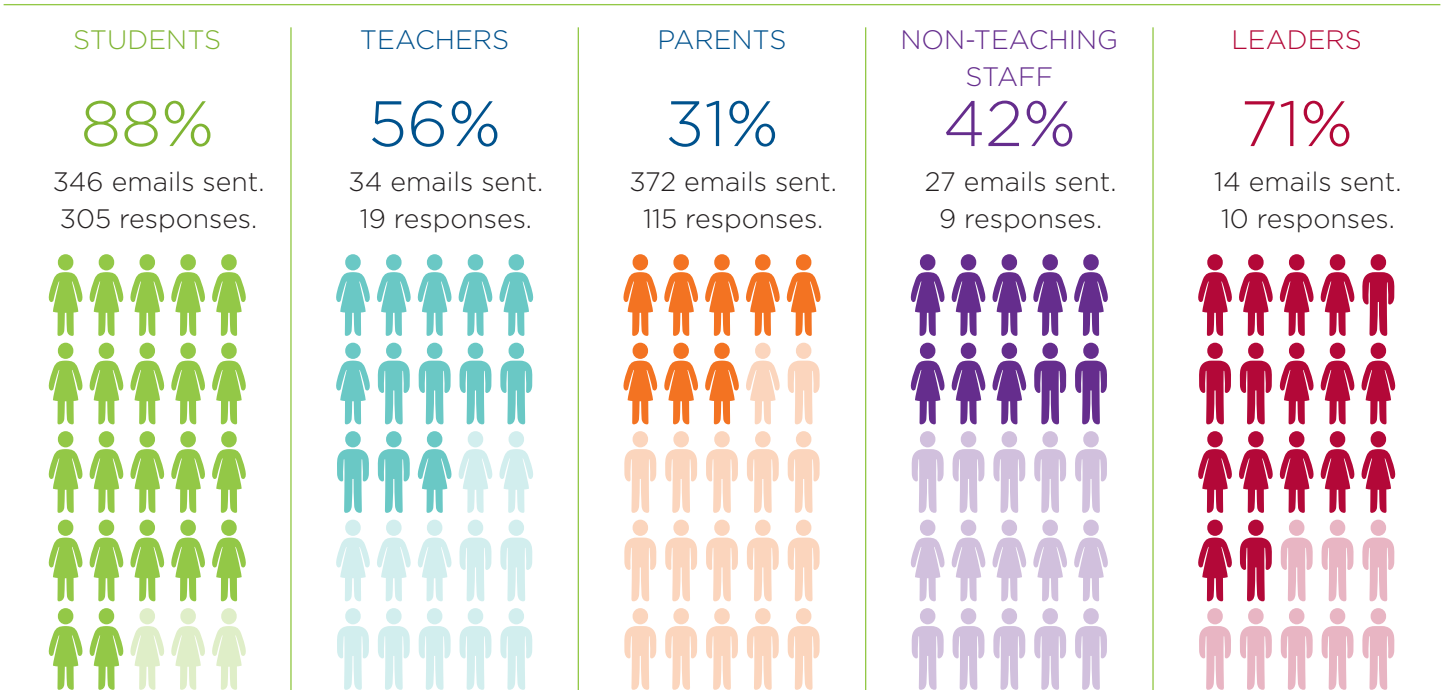
DOMAIN COMMUNITY

Community involvement and engagement is a distinctive element of being an independent school. This domain focuses on **communication, student/community engagement (co-curricular activities, sport and service learning), reporting, and reputation.**



Your School's performance across the domain of Community is mixed, with strong means in the dimensions of **reporting** and **reputation**. The means for **communications** and **student community education** indicates scope for further exploration.

RESPONSE RATES



Contact details

Your school
School email
School phone