

WHAT IS EDUCATIONAL DATA?

There is more to educational data than test scores...

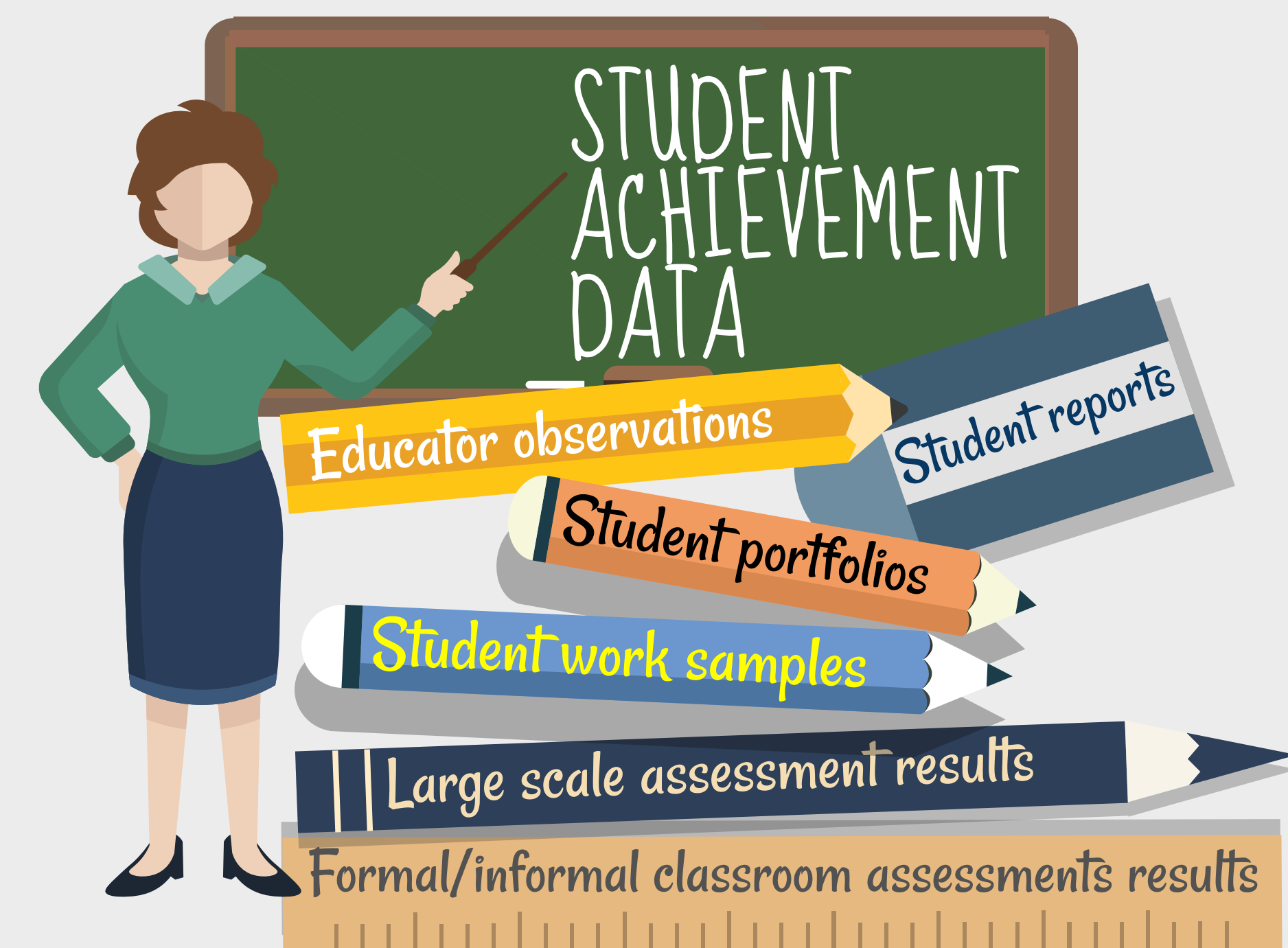
CONTEXTUAL/ STUDENT CHARACTERISTIC DATA

Gender
Attendance
Linguistic background
Family



SOME WAYS YOU CAN COLLECT THIS DATA...
Enrolment information, student profiles, parent surveys and meetings, attendance roll

WHAT CAN THE DATA TELL ME?
How many students are bi-lingual?
Which students consistently miss more than one lesson per week?
Which students have been identified as at-risk academically? Socially?



SOME WAYS YOU CAN COLLECT THIS DATA...

Observation, checklists, portfolios, work samples, previous records, class records

WHAT CAN THE DATA TELL ME?

What learning was observed during class today?
Which students do I need to reteach today's maths concept to?
How did the Year 4 girls in my class perform on the authentic writing task?
How are Year 7 students progressing with skills of Working Scientifically in science?

STUDENT WELLBEING DATA

Captures social and emotional learning and development: connectedness to school, student morale, student safety, perceptions of relationships and classroom behaviour

SOME WAYS YOU CAN COLLECT THIS DATA...

Sociograms, surveys, focus groups, conversations, observations, collaborative planning meetings

WHAT CAN THE DATA TELL ME?

How are Year 9 boys best engaged during mathematics class?
What do the Stage 3 students feel most connection with at this school? To whom are the students most connected?
Where do students feel safest in this school?

PERCEPTION DATA

Students
Parents
Teachers
Community

SOME WAYS YOU CAN COLLECT THIS DATA...
Surveys, interviews, focus groups

WHAT CAN THE DATA TELL ME?

What are parent/student/staff perceptions of our school's:

- learning culture
- use of resources
- pedagogical practices
- differentiated teaching and learning practices
- use of data decision making processes
- community partnership
- teacher student relationships
- student engagement
- inclusive practices



When educators have the skills required to analyse, interpret and make use of student data effectively, student academic and wellbeing outcomes improve.

Good data is...

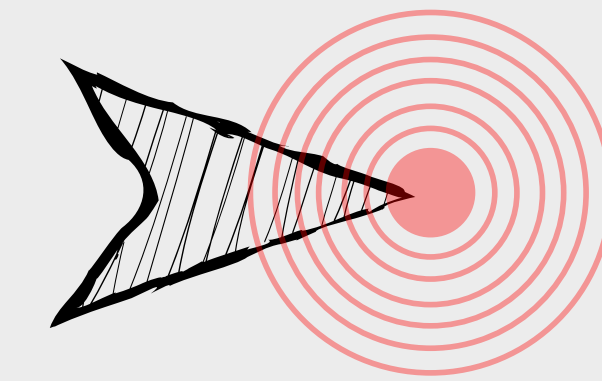
COMPLETE



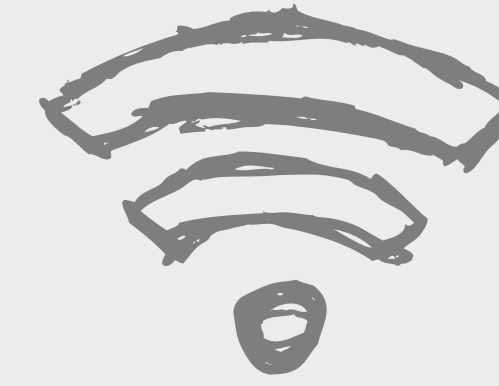
ACCURATE



RELEVANT



ACCESSIBLE



TIMELY



INTERPRETABLE



SECURE



Using multiple measures - triangulating the data...

Each dataset can answer numerous, specific questions. Combining datasets can provide educators and schools with a more complex and in-depth picture of what is occurring.

Which datasets you choose are determined by the specific question you are wanting to answer.

